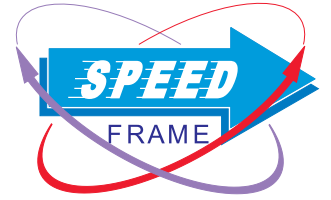
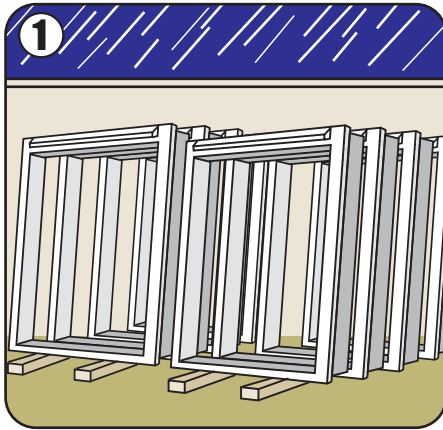


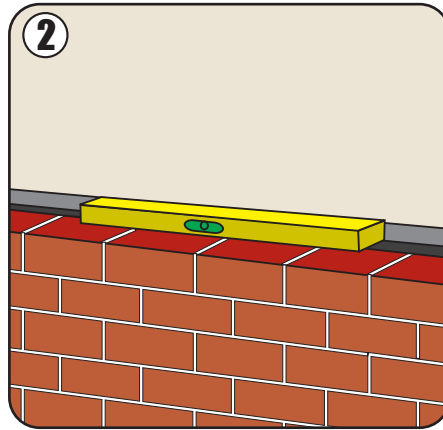
Cavity closer & window system installation guide



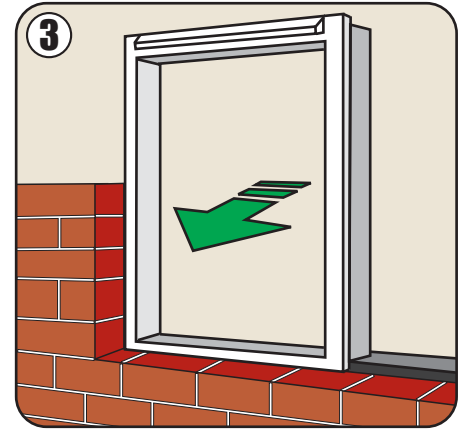
A quick and easy step by step guide to installing our unique cavity closer and window system.



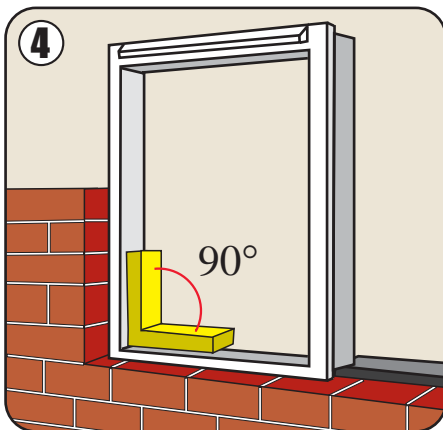
1 Cavity Closers are to be stored on site in an upright position, on timber batten in a sheltered area.



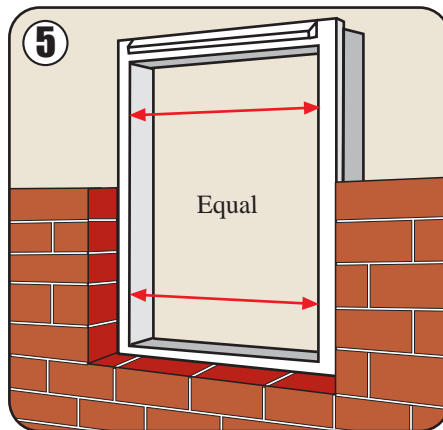
2 Ensure Closer is fitted on a level surface.



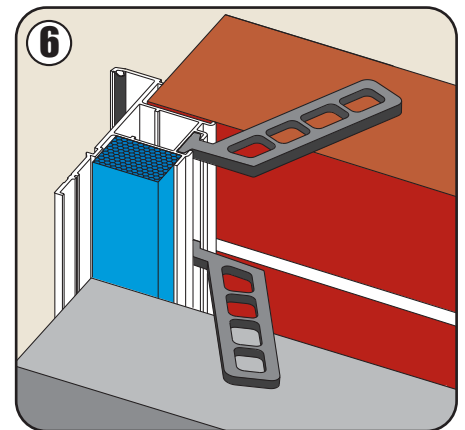
3 Closer must be inserted the correct way round i.e. flange and curved head section to the outside, and trickle vent head section at the top.



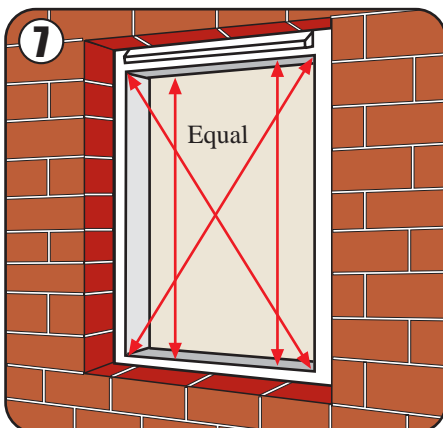
4 Ensure Closer is square and not in twist.



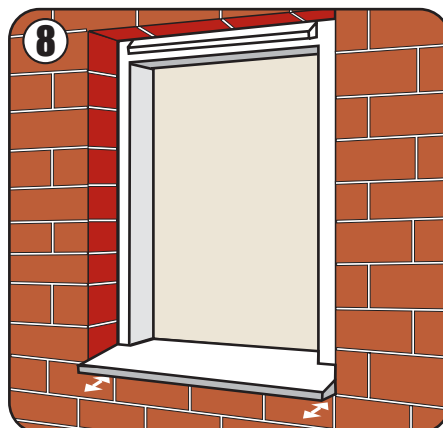
5 When bricking-in, ensure sides remain undished, i.e. the internal dimension is the same at the top, middle and bottom.



6 Closer is held in position by brick ties, inserted every third / fourth brick course, and alternately into brickwork inner skin.



7 Ensure verticals are plumbed in both planes.



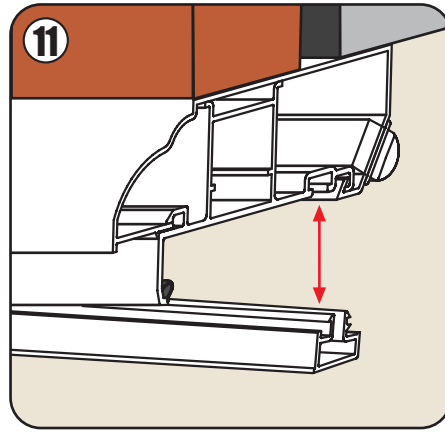
8 The Closer must be fitted tight to the outside skin, this is critical to ensure correct cill overhang when windows are fitted.



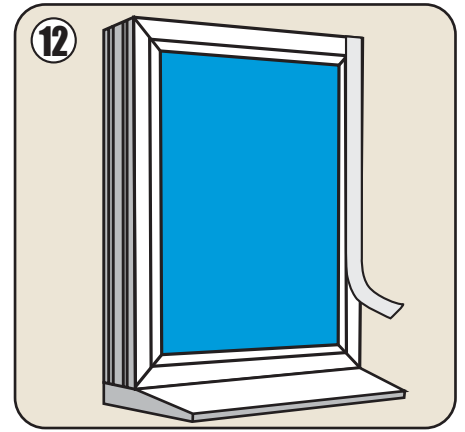
9 Clean any excess mortar from the window reveal area, and ensure that the cavity closer is securely fixed into the brick/blockwork.



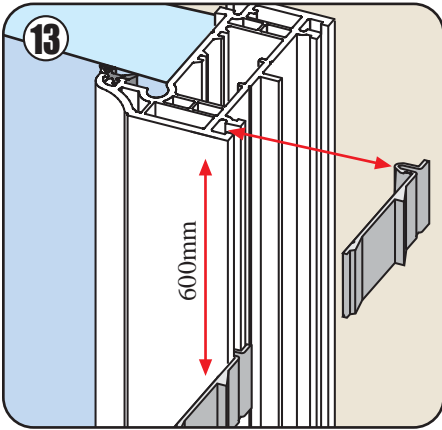
Remove all the protective tape from the flanges of the cavity closer.



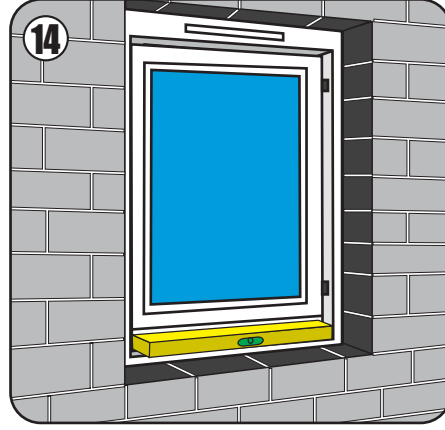
Remove the head retaining bead from the cavity closer by knocking a wide bladed chisel into the joint between the bead and the main body of the cavity closer. This will release the bead, which should be set aside for later use.



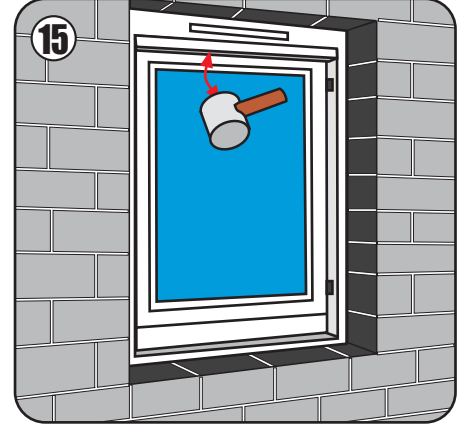
Remove the protective tape from the head and jamb sections of the window, both internally and externally, but **DO NOT** remove the protective film from the glass. This should remain in place until the final cleaning of the property.



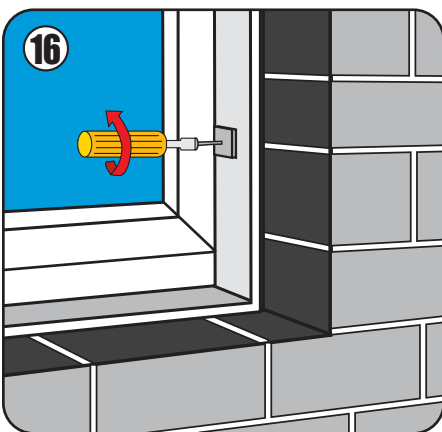
Fit the window retaining clips to each jamb of the window, at no more than 600mm centres



Offer up the new window into position in the cavity closer. and using a spirit level, check the window for level, if necessary make level using the packers provided.



Once levelled, fit the head retaining bead. This is easily achieved using a rubber mallet.



Screw fix through the window retaining clip into the cavity closer using 50mm screws.



Apply a 6mm bead of clear silicone 150mm long to the vertical at each internal corner, and completely along the horizontal where the outer frame meets the cavity closer



Apply a 6mm bead of Silicone joint to run from top to bottom of the closer jamb